

Motion Detection Sensor (MDS) Kit

Installation & User manual

MCR-SMC

- Thank you for purchasing this Samsung Product.
- Before operating this unit, please read this user manual carefully and retain it for future reference.



DB68-07716A-00

SAMSUNG

Contents

| | |
|---|----------|
| Safety Information | 3 |
| Safety Information | 3 |
| Installation | 4 |
| Installation | 4 |
| MDS Kit | |
| Accessories | |
| Installing the MDS Kit | |
| Installation troubleshooting | |
| Operation | 6 |
| Operation | 6 |
| Turning the MDS Kit on or off | |
| Setting the MDS Kit installation option | |
| Samsung comfort control features | |
| Operation troubleshooting | |

Safety Information

This manual explains how to install a Motion Detection Sensor (MDS) kit onto an indoor unit and how to use it. Please read this manual thoroughly before installing and using the MDS Kit.

WARNING

Hazards or unsafe practices that may result in severe personal injury or death.

CAUTION

Hazards or unsafe practices that may result in minor personal injury or property damage.

WARNING

Contact a qualified installer or a service center for the installation.

When detaching or disposing of an MDS Kit, contact a qualified installer or a service center.

- Failing to do so may result in electric shock, fire, explosion, problems with the product, or injury and may also void warranty on the installed product.

Install an MDS Kit securely in a designated place, using the installation accessories.

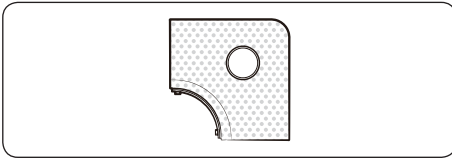
- If the MDS Kit is not installed securely, the component might fall off and get damaged.

Do not attempt to repair, disassemble, or modify the appliance yourself.

- Failing to do so may result in product malfunction, electric shock, or fire.
So when repairing the product, contact a qualified installer or a service center.

Installation

MDS Kit



Accessories

| Item | Connection wire | Cable tie | Installation manual/User manual |
|----------|-----------------|-----------|---------------------------------|
| Quantity | 1 | 2 | 1 |
| Shape | | | |

⚠ CAUTION

- When installing the MDS Kit, be sure to use the kit and accessories designated by Samsung.

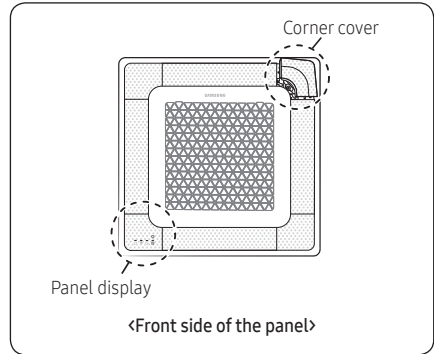
Installing the MDS Kit

- If the panel is already installed onto the indoor unit, remove it from the indoor unit. For more information about removing the panel, refer to the Panel installation manual.

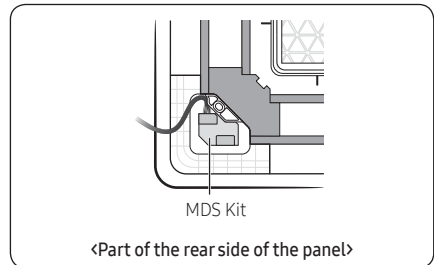
⚠ CAUTION

- Be sure to install the MDS Kit onto the panel while it is disassembled from the indoor unit.

- Remove the corner cover from the panel, located at the opposite diagonal corner of the panel display.

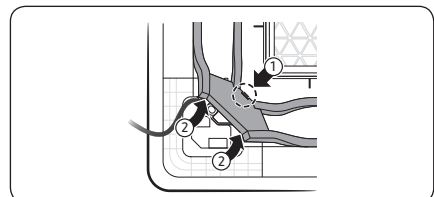


- Mount the MDS Kit onto the same location.

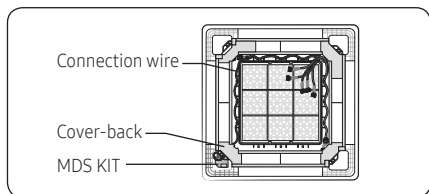


📄 NOTE

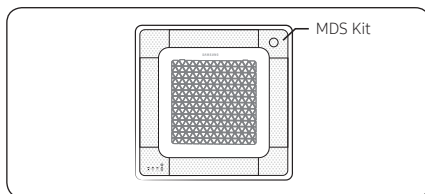
- The MDS Kit cannot be installed onto any location other than the designated one.
- Arrange the connection wire:
 - Push the hook ① on the cover-back.
 - Lift up the cover-back in the direction of arrows ② as shown in the figure.



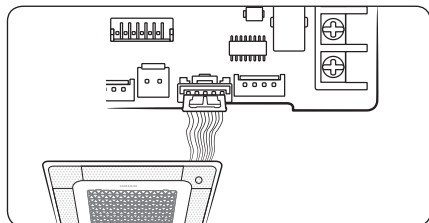
- c Arrange the connection wire using the supplied cable ties so that, when the cover-back is back in place, it is located under the cover-back.
- d Lower down the cover-back so that it is in place.



- 6 Assemble the panel onto the indoor unit. For more information about assembling the panel, refer to the Panel installation manual.



- 5 Connect the connection wire to the indoor unit PBA. When connecting the wire to the indoor unit PBA, check the colors and numbers of the pins on the terminal.



- 7 Set the MDS Kit installation option using the wired or wireless remote control.

NOTE

- Because the indoor unit ships with the MDS Kit installation options set to "Disuse", you must change the value of the MDS Kit installation option.
- For more information about how to set the MDS Kit installation options, see **Setting the MDS Kit installation option** on page 7 and the indoor unit installation manual.
- Enter the installation option value more than twice.
- After entering the installation option value, reset the indoor unit to check for correct operation.

Installation troubleshooting

| Abnormal conditions | LED lamp display | | | | Remarks |
|---|------------------|---------|-------|--------|---------|
| | Operation | Defrost | Timer | Filter | |
| | ⏻ | ❄️ | 🕒 | 📅 | |
| MDS Kit error indication (displayed on the indoor unit) | ● | X | X | ● | |

● On ● Flickering X Off

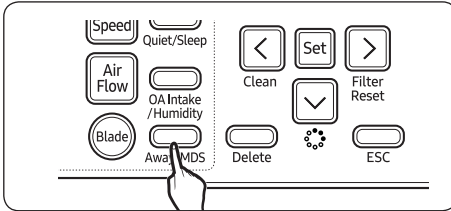
If you turn off the air conditioner when an LED is flickering, the LED is also turned off.

Operation

Turning the MDS Kit on or off


Using wired remote control

Press the MDS button on the wired remote control to turn the MDS Kit on or off.



NOTE

- The wired remote control must be installed together with the indoor unit.

| MDS Button Click  | Once | Twice | Three times |
|--|--------------------------------|---------------------|-------------|
| Display | Indirect | Direct | - |
| Standard Mode | MDS On (only Turn off the set) | | MDS Off |
| Premium Mode | Indirect Flow Control | Direct Flow Control | MDS Off |

Using wireless remote control

Indirect function with Motion detection feature



Direct function with the Motion detection feature



| Option Selection | Indirect | Direct | No Selection |
|------------------|--------------------------------|---------------------|--------------|
| Standard Mode | MDS On (only Turn off the set) | | MDS Off |
| Premium Mode | Indirect Flow Control | Direct Flow Control | MDS Off |

NOTE

- In the Standard mode, Indirect/Direct is displayed on the wireless remote control, but does not operate.
- The Indirect/Direct function is supported only in the Premium mode.

Setting the MDS Kit installation option

Set SEG23, the MDS Kit installation option of the indoor unit where the MDS Kit is installed, to the desired value with referring to the table below.

| Function | SEG23 | Soft Off + Hard off | SEG23 | Soft Off only |
|----------|-------|--|--------|-------------------|
| | | 0 | Disuse | |
| Standard | 1 | Off after 20 min. (from the last motion detection) | 7 | Off after 20 min. |
| | 2 | Off after 40 min. | 8 | Off after 40 min. |
| | 3 | Off after 80 min. | 9 | Off after 80 min. |
| Premium | 4 | Off after 20 min. | A | Off after 20 min. |
| | 5 | Off after 40 min. | B | Off after 40 min. |
| | 6 | Off after 80 min. | C | Off after 80 min. |

SOFT OFF: The indoor unit turns off its operation at the indicated time in the table for Installation Option after its final motion detection. But, it turns on again if the MDS detects motion.

HARD OFF: Designated time after SOFT OFF, it cannot turn on automatically when it detects motion. Users should control to turn on the indoor unit with remote control, etc.

NOTE

- Detectable MDS area: 6 m radius at 2.7 m height.
- When the air conditioner supports the Wind-Free Cooling function, it operates the Wind-Free Cooling function automatically before the air conditioner turns off.
- If it happens repeatedly that the MDS Kit turns the air conditioner off and on, the kit reduces the time taken until the air conditioner is turned off for energy efficiency.
- In the Standard mode, you can only turn on/off the air conditioner.
- In the Premium mode, you can also operate the functions such as turning on/off the air conditioner, comfort temperature and comfort saving controls.
- The MDS sensor may detect other heat sources, not humans, and perform the MDS functions.

Samsung comfort control features

The following Samsung comfort control features are activated when SEG23, the MDS Kit installation option of the indoor unit, is set to the Premium mode. For more information about the MDS Kit installation option, see **Setting the MDS Kit installation option** on page 7.

- **Indirect Flow:** When the MDS Kit detects motion, it moves the air flow blades to prevent the breeze from blowing directly toward the specified areas (locations where humans are).
- **Direct Flow:** When the MDS Kit detects motion, it moves the air flow blades to send the breeze directly toward the specified areas (locations where humans are).
- **Comfort Temperature:** When the temperature difference between the upper part and lower part of a room is significant, the MDS Kit moves down the air flow blades to mix airs and consequently to reduce the temperature difference.
- **Comfort Saving:** The MDS Kit detects motion in the room and controls the set temperature (up to the amount of +2°C for cooling, -2°C for heating) to reduce electricity consumption.

Operation

Operation troubleshooting

- If the MDS Kit has a connection problem or malfunction, the MDS Kit error E143 is indicated on both the panel display and the wired remote control.
- Although the MDS Kit error occurs, the indoor and outdoor units normally operate without the MDS Kit functions.
- If the MDS Kit error persists, check the wire connection and contact a service center.

Memo

SAMSUNG

