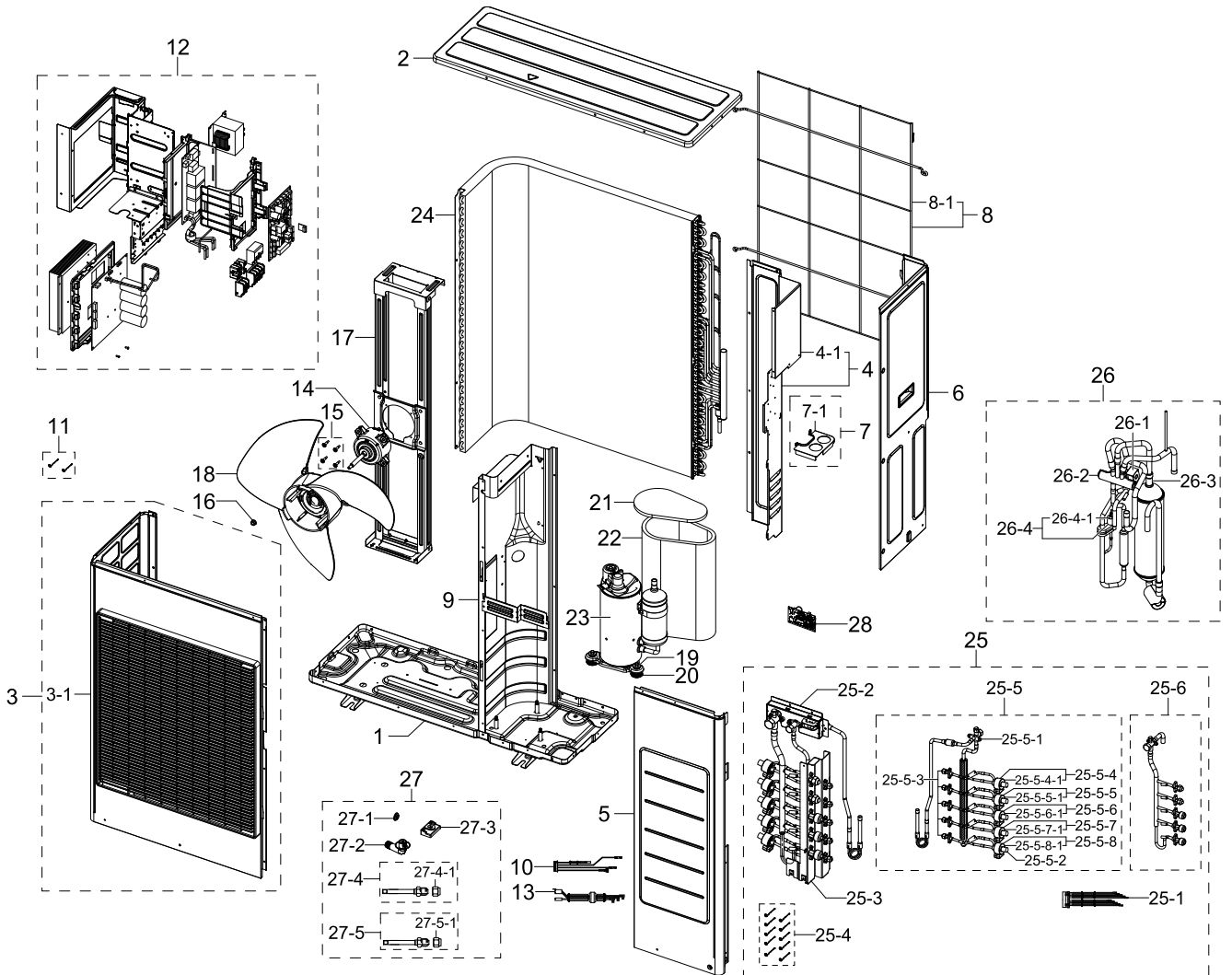


# 1. AJ100TXJ5KG/EU

## Exploded View



## Parts List

No.	Lvl.	Loc.	Material Code	Description & Specification	SNA	Qty.
1	2	A0092	DB90-05873Q	ASSY BASE OUT; AJ100MCJ5EH	SA	1
2	2	A0212	DB90-05902E	ASSY CABINET-TOP; RC090MHXEA,EHS MONO	SA	1
3	2	A2620	DB90-05971D	ASSY CABI FRONT-LF; AC120HCADKH/EU	SA	1
3-1	3	G0153	DB63-02728C	GUARD FAN; UB CHASSIS,PP,T2.5,EARTH BROWN	SA	1
4	2	A2609	DB90-06546D	ASSY CABI BACK-RH; RJ100F5HXEA,FJM2	SA	1
4-1	3		DB90-06551B	ASSY CABI BACK-RH PAINT; RJ100F5HXEA,FJM2	SA	1
5	2	A0173	DB90-06547C	ASSY CABI FRONT RH; RJ100F5HXEA,FJM2	SA	1
6	2	A0206	DB90-06548C	ASSY CABI SIDE-RH; RJ100F5HXEA,FJM2	SA	1
7	2		DB90-06549A	ASSY BRACKET-VALVE SUB; RJ100F5HXEA,FJM2	SA	1
7-1	3		DB61-04959A	BRACKET-VALVE SUB; RJ100F5HXEA,GI-SGCC,0.	SA	1
8	2		DB90-08318B	ASSY GUARD-COND; UB1 for FJM	SNA	1

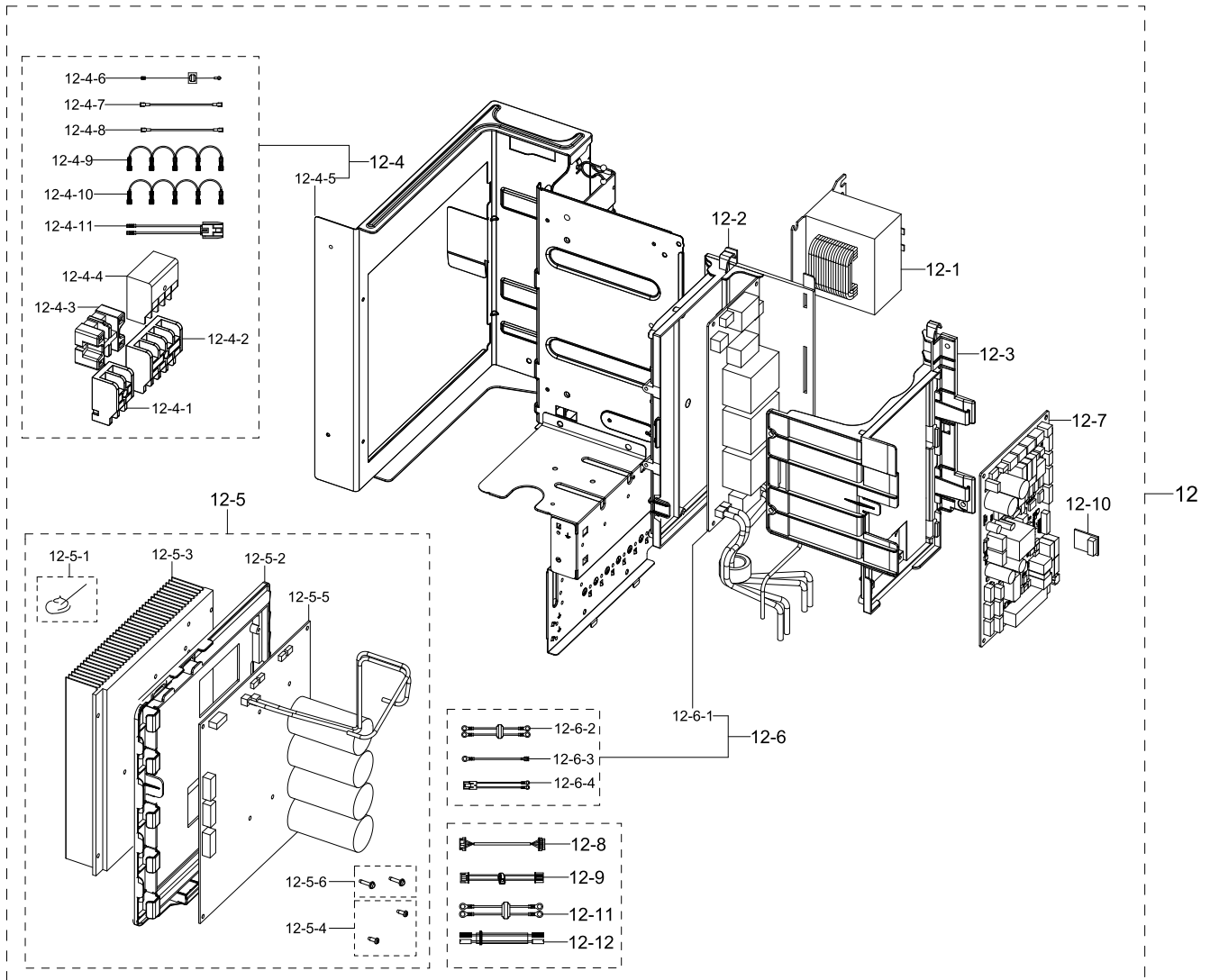
Exploded Views and Parts List

No.	Lvl.	Loc.	Material Code	Description & Specification	SNA	Qty.
8-1	3		DB63-02971B	GUARD COND; RJ100F5HXEA,MSWR-SWRM,EARTH B	SA	1
9	2	A1748	DB94-03262B	ASSY PARTITION; RJ100F5HXEA,FJM2	SA	1
10	2		DB32-00267B	SENSOR TEMP; SMH250-08L,L1200,10kohm	SA	1
11	2	S0242	DB81-00635A	SPRING ETC-SENSOR; DVM-SYSTEM,STS304,R2.5	SA	2
12	2		DB92-04920A	ASSY KIT-OUT; OUTDOOR,FJM NASA,UB1-R32,St	SNA	1
13	2	A0630	DB93-15687A	ASSY CONNECTOR WIRE-COMP; 3,3343,12,RED,M	SA	1
14	2	M0039	DB31-00579A	MOTOR FAN; 125W,0Hz,DC310V,CLASS E	SA	1
15	2	S0019	DB60-00150A	SCREW-SPECIAL; HWH,M4,L26,ZPC(WHT),SWRCH1	SA	4
16	2		DB60-00405A	FASTENER-WASHER; RC100ZHxEA,SWRCH10A,M8	SA	1
17	2	A2803	DB90-05918B	ASSY BRACKET MOTOR; RC100DHxEA,R410A	SA	1
18	2		DB94-04381A	ASSY FAN PROPELLER; DVM S ECO,520	SA	1
19	2	S0018	DB60-30028A	NUT-FLANGE; HWH,M8,ZPC(WHT),SWRCH18A,P1.2	SA	3
20	2		DB63-02297A	GROMMET ISOLATOR; 48F,NR,L32.5,ID11.5,OD2	SNA	3
21	2		DB63-03164A	CLOTH-COMP TOP; AC110RX4DBH1,CLOTH/EVA/FE	SA	1
22	2		DB63-03451A	FELT-COMP SIDE; RJ100F5HXEA,FELT,T8,610,3	SA	1
23	2		DB95-05799A	ASSY COMP; AJ100RCJ5EG/EU,R32	SA	1
24	2		DB96-23729A	ASSY COND BENDING; FJM NORDIC	SA	1
25	2		DB96-23250D	ASSY VALVE; AJ100TXJ5EG/EU	SA	1
25-1	3		DB32-00278D	SENSOR TEMP; 103AT,WB20M-024-411/WHT,L850	SA	1
25-2	3		DB61-04958A	BRACKET-VALVE SUPPORT; RJ100F5HXEA,GI-SGC	SA	1
25-3	3	B0712	DB61-04963A	BRACKET-VALVE; RJ100F5HXEA,SGMCC,T1.2,W86	SA	1
25-4	3	S0242	DB81-00635A	SPRING ETC-SENSOR; DVM-SYSTEM,STS304,R2.5	SA	10
25-5	3		DB96-23297A	ASSY TUBE EEV; AJ100MCJ5EH	SA	1
25-5-1	4		DB62-12108A	VALVE SERVICE-SPINDLE; T-TYPE, NO PORT,R4	SA	1
25-5-2	4		DB62-12123A	VALVE EXPAN; DPFI. 3C-018,STS304,R410A,1.	SA	5
25-5-3	4		DB67-00281B	NIPPLE; RVPC035B2M0,C3771,-,-,L37,-,1/4	SA	5
25-5-4	4		DB96-23422A	ASSY VALVE-EXPANSION; AJ100MCJ5EH	SNA	1
25-5-4-1	5		DB62-12208A	VALVE COIL EXPAN; DC12V,COIL,1000,15.45,M	SA	1
25-5-5	4		DB96-23422B	ASSY VALVE-EXPANSION; AJ100MCJ5EH,YELLOW	SNA	1
25-5-5-1	5		DB62-12208A	VALVE COIL EXPAN; DC12V,COIL,1000,15.45,M	SA	1
25-5-6	4		DB96-23422C	ASSY VALVE-EXPANSION; AJ100MCJ5EH,BLUE	SNA	1
25-5-6-1	5		DB62-12208A	VALVE COIL EXPAN; DC12V,COIL,1000,15.45,M	SA	1
25-5-7	4		DB96-23422D	ASSY VALVE-EXPANSION; AJ100MCJ5EH,BLACK	SNA	1
25-5-7-1	5		DB62-12208A	VALVE COIL EXPAN; DC12V,COIL,1000,15.45,M	SA	1
25-5-8	4		DB96-23422E	ASSY VALVE-EXPANSION; AJ100MCJ5EH,WHITE	SNA	1
25-5-8-1	5		DB62-12208A	VALVE COIL EXPAN; DC12V,COIL,1000,15.45,M	SA	1

No.	Lvl.	Loc.	Material Code	Description & Specification	SNA	Qty.
25-6	3		DB96-23418A	ASSY TUBE EEV-JOINT; AJ100MCJ5EH	SA	1
26	2		DB96-24675B	ASSY TUBE 4WAY; AJ100TXJ5EG/EU	SA	1
26-1	3	S0247	DB33-00002K	SOLENOID-COIL ASSY; 220V	SA	1
26-2	3	V0010	DB62-02838A	VALVE 4WAY; COMMON,3.5	SA	1
26-3	3	A0316	DB96-14716A	ASSY-ACCUMULATOR; RC100PHXEA,1600CC	SA	1
26-4	3		DB96-24941A	ASSY SWITCH PRESSURE; AJ100TXJ5EG/EU	SA	1
26-4-1	4	RJ101	DB34-00089A	SWITCH PRESSURE; DC5mA,DC5V,4.2MPa,L1200,	SA	1
27	2		DB97-18601A	ASSY ACCESSORY; HP,Inv,10.0kW,N,RJ100F5HX	SNA	1
27-1	3	Z0165	DB63-10355C	CAP-DRAIN; -,CR,T2,-,-,-,-,BLACK,-,-,-,	SA	3
27-2	3	D0116	DB67-00806A	DRAIN-PLUG OUT; UH140GAV,PE,-,-,-,-,NATUR	SA	1
27-3	3	Z0166	DB73-20134A	RUBBER-LEG; V2-MD,NBR,10,BLACK	SA	4
27-4	3		DB96-16155A	ASSY TUBE; RJ100F5HXEA,FJM2	SNA	3
27-4-1	4	N0027	DB60-30010B	FASTENER-NUT FLARE; AR12RV3HEWKXNA,BRASS	SA	3
27-5	3		DB96-16155B	ASSY TUBE; RJ100F5HXEA,FJM2	SNA	2
27-5-1	4	N0027	DB60-30010D	FASTENER-NUT FLARE; BRASS	SA	2
28	1		DB82-00835C	A/S ASSY-EEPROM; AJ100TXJ5KG,EU,UB1,PF4-S	SA	1

## 2. ASSY KIT-OUT

### Exploded View



### Parts List

No.	Lvl.	Loc.	Material Code	Description & Specification	SNA	Qty.
12	2		DB92-04920A	ASSY KIT-OUT; OUTDOOR,FJM NASA,UB1-R32,St	SNA	1
12-1	3		DB27-00100A	COIL HARMONIC; 5mH,86.0x94.5xTmm,20A,-	SA	2
12-2	3		DB61-04502D	CASE-EMI; RC090MHXEA,HIPS,L0,NATURAL,VE-1	SA	1
12-3	3		DB61-05743A	CASE-PCB; AM053FXMDCH/AA,HIPS,T2,L243.3,N	SA	1
12-4	3		DB90-11265C	ASSY PLATE-CONTROL; AJ100TXJ5KG	SA	1
12-4-1	4		DB37-00036A	TERMINAL BLOCK; 2P(4SCREW),MELAMINE,600V,	SA	1
12-4-2	4		DB37-00037A	TERMINAL BLOCK; 4P(8SCREW),MELAMINE,600V,	SA	1
12-4-3	4		DB37-00041A	TERMINAL BLOCK; DATB-S30A-2P-M,MELAMINE,6	SA	1
12-4-4	4		DB65-00304B	TERMINAL BLOCK; FJM2 SI, P,DAF-25A-4TP	SA	1
12-4-5	4		DB90-06550C	ASSY CASE CONTROL-SUB; AJ100MCJ5EH	SA	1

No.	Lvl.	Loc.	Material Code	Description & Specification	SNA	Qty.
12-4-6	4		DB93-10906C	ASSY CONNECTOR WIRE-OUT EARTH; 1,1015,18,	SA	1
12-4-7	4	A3088	DB93-11280A	ASSY CONNECTOR WIRE-TERMINAL BLOCK; 1,101	SA	2
12-4-8	4	A3088	DB93-11280B	ASSY CONNECTOR WIRE-TERMINAL BLOCK; 1,101	SA	2
12-4-9	4		DB93-11914E	ASSY CONNECTOR WIRE-UB1 POWER JUMP; 4,101	SA	1
12-4-10	4		DB93-11914F	ASSY CONNECTOR WIRE-UB1 POWER JUMP; 1,101	SA	1
12-4-11	4		DB93-12145A	ASSY CONNECTOR WIRE-T B POWER TO EMI; 2,1	SA	1
12-5	3		DB92-04560A	ASSY KIT; OUTDOOR PF#4,E1-PJT,INVERTER_SA	SA	1
12-5-1	4		0205-000178	GREASE-SILICON; YG6111,WHITE, for assembl	SA	0
12-5-2	4		DB61-06473A	CASE PCB; AC145JX4PHH1,ABS,COOL WHITE	SA	1
12-5-3	4	H0034	DB62-12093A	HEAT SINK; NEW PLATFORM #4,AI,10,200,192,	SA	1
12-5-4	4	A2876	DB91-00306A	ASSY-SCREW MACHINE; BLDC INV. CONTROLLER,	SA	2
12-5-5	4		DB92-04535A	ASSY PCB INVERTER; INVERTER,EHS_PF#4_SAFE	SA	1
12-5-6	4	A2876	DB91-00307A	ASSY-SCREW MACHINE; WW-INV,M4*16,WSP,PH,+	SA	2
12-6	3		DB92-04635B	ASSY KIT; OUTDOOR,FJM,EMI PBA,POWER WIRE,	SNA	1
12-6-1	4	A1781	DB93-13593A	ASSY PCB SUB-EMI; SUB,CAC-07,230*90,-,-,-	SA	1
12-6-2	4	A0664	DB93-13687C	ASSY CONNECTOR WIRE-POWER; 2,1015,12,BRN,	SA	1
12-6-3	4	A0646	DB93-13692B	ASSY CONNECTOR WIRE-EARTH; 1,1015,16,YEL/	SA	1
12-6-4	4	A0664	DB93-16998A	ASSY CONNECTOR WIRE-POWER; 2,1015,12,BRN,	SA	1
12-7	3	A0743	DB92-04917A	ASSY PCB MAIN-OUT; OUTDOOR,FJM NASA,192x1	SA	1
12-8	3	A2934	DB93-04273B	ASSY CONNECTOR WIRE-COMM; 6,2095,26,BLU,S	SA	1
12-9	3	Z0154	DB93-10809A	ASSY CONNECTOR WIRE-EMI TO MAIN POWER; 2	SA	1
12-10	3		DB93-12483A	ASSY PCB SUB-EEPROM; SUB,DVMPLUS4 UP,20*2	SA	1
12-11	3	A0664	DB93-13687A	ASSY CONNECTOR WIRE-POWER; 2,1015,12,BRN,	SA	1
12-12	3	A2610	DB93-15686A	ASSY CONNECTOR WIRE-REACTOR; 2,3343,12,BL	SA	2