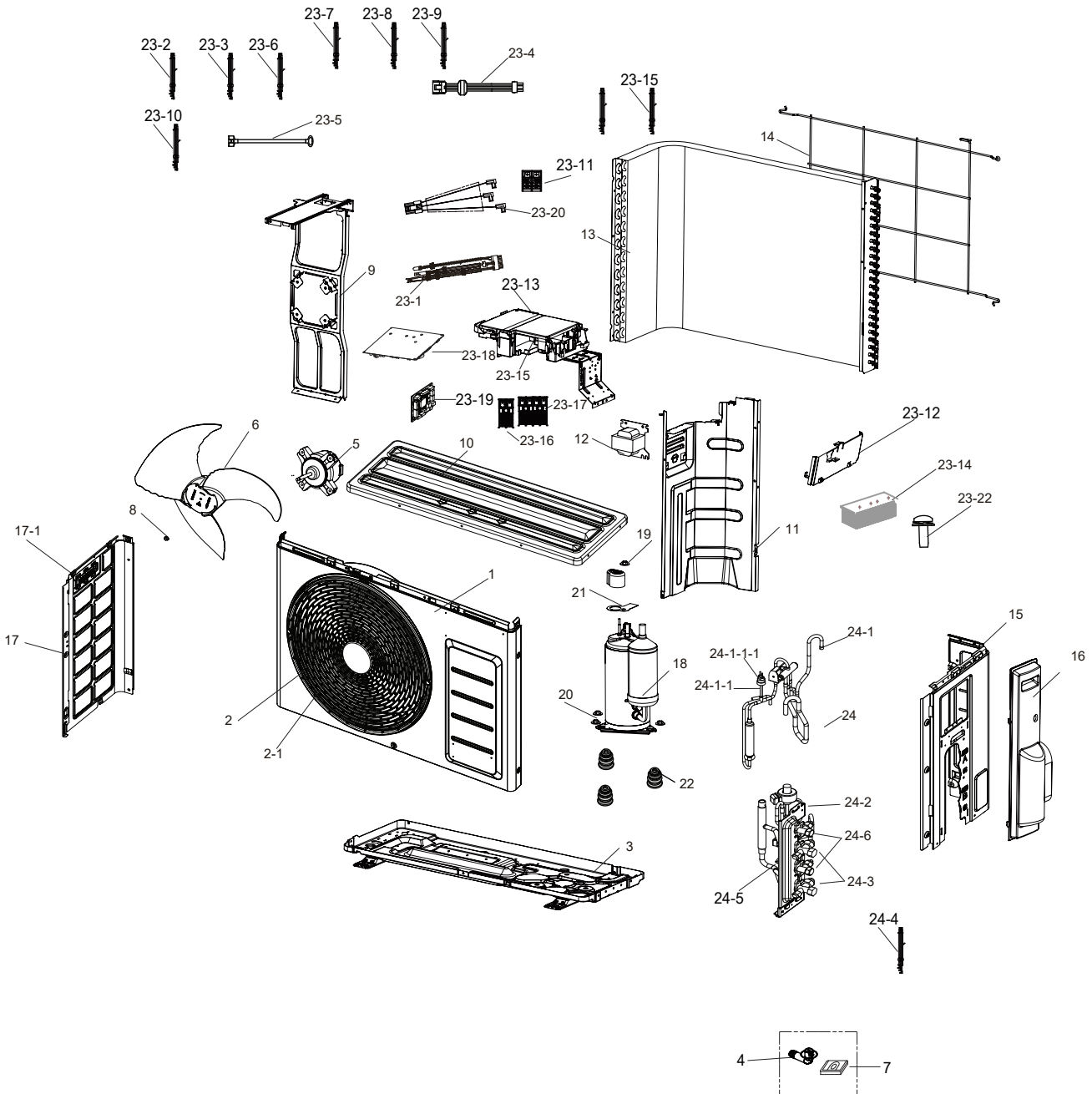


OUTDOOR UNIT

AJ050TXJ2KG/EU



No.	Code No.	Description	Specification	Q'ty	SA/SNA
1	DB90-07737N	ASSY CABI FRONT	FJM N-SI,SSEC	1	SA
2	DB90-09644A	ASSY GUARD-FAN	N-WW1/N-SI,ASSY	1	SA
2-1	DB63-03660A	GUARD FAN	PP,EARTH BROWN	1	SA
3	DB90-07728L	ASSY BASE OUT	FJM N-SI,AJ050NCJ2EG/EU	1	SA
4	DB67-00477A	DRAIN-PLUG OUT	UH140GZMC,PP,WHITE,SSEC	1	SA
5	DB31-00642C	MOTOR BLDC FAN	RD-310-45-8B,310V,40W	1	SA
6	DB67-01407A	FAN PROPELLER	PP+GF20%+PD20%	1	SA
7	DB67-01533A	RUBBER-LEG	All frame,NR,BLACK	4	SNA
8	DB60-00437A	FASTENER-NUT FLANGE	SWRCH10A,14,1.2,6	1	SA
9	DB90-07834E	ASSY BRACKET MOTOR	New SI,ASSY	1	SA
10	DB90-07738A	ASSY CABI TOP	F-XS-03_SI CHASSIS,ASSY	1	SA
11	DB94-07298A	ASSY PARTITION	AJ050NCJ2EH/EU,FJM N-SI	1	SA
12	DB27-00042B	COIL HARMONIC	5mH,94*94*76.2,15A,Screw	1	SC
13	DB96-18308A	ASSY COND	AJ040FCJ2EH/EU,SSEC	1	SA
14	DB63-03873A	GUARD COND	F-XS-03,MSWR,T3,EARTH BROWN	1	SA
15	DB90-11029C	ASSY CABI SIDE-RH	FJM,NEW SI	1	SA
16	DB90-07455A	ASSY COVER-VALVE	SI,SSEC	1	SA
17	DB90-08039A	ASSY CABI SIDE-LEFT	N-SI,A3050,F-XS-03,G	1	SA
17-1	DB64-00992C	HANDLE-LF	PP weatherability,SSEC	1	SA
18	DB95-05762A	ASSY COMP	KTN130D42UFR,R32	1	SA
19	DB60-00437A	FASTENER-NUT FLANGE	SWRCH10A,14,1.2,6	1	SA
20	DB60-30028A	NUT-FLANGE	HWH,M8,ZPC(WHT),SWRCH18A,P1.2	3	SA
21	DB63-01416C	GASKET	A/C model,SIR,T1.2,25.0,L55,A/C m	1	SA
22	DB63-03386A	GROMMET ISOLATOR	NR,33,11.5,34,BLACK	3	SA
23-1	DB32-00251B	SENSOR TEMP	103FW,SMH200-08H/WHT,L800,10	1	SA
23-2	DB93-11244A	ASSY CONNECTOR WIRE	3,1331,16,RED,MG6150	1	SA
23-3	DB93-16973B	ASSY CONNECTOR WIRE-POWER	2,1015,14,BRN,	1	SA
23-4	DB93-16974A	ASSY CONNECTOR WIRE-POWER	2,1015,18,BRN,	1	SA
23-5	DB93-10906A	ASSY CONNECTOR WIRE-EARTH	1,1015,18,YEL/	1	SA
23-6	DB93-10906B	ASSY CONNECTOR WIRE-EARTH	1,1015,18,YEL/	1	SA
23-7	DB93-17033A	ASSY CONNECTOR WIRE-DC SIGNAL	8,2095,26,	1	SA
23-8	DB93-17175A	ASSY CONNECTOR WIRE-REACTOR	2,1015,16,WH	1	SA
23-9	DB93-16402A	ASSY CONNECTOR WIRE-COMM	2,1007,22,RED,Y	1	SA
23-10	DB93-11280A	ASSY CONNECTOR WIRE-TERMINAL BLOCK	1101	1	SNA
23-11	DB65-00298C	TERMINAL BLOCK	FJM2 SI, P,DAF-25A-2TP	1	SA
23-12	DB61-07235A	CASE PCB	NEW #3 CONTROLLER,ABS,T2,L185.3	1	SA
23-13	DB61-07250A	CASE CONTROL-OUT	SI,ABS,T2,L256	1	SNA
23-14	DB62-12196B	HEAT SINK	PF2_17S,AI,3,55,142,DUCT,43	1	SA
23-15	4719-002484	POWER MODULE	600V,15A,DIP,FNA41560B5,26,	1	SNA
23-16	DB37-00027B	TERMINAL BLOCK	JXW-2-A,MELAMINE,300V,25A	1	SA
23-17	DB37-00036A	TERMINAL BLOCK	2P(4SCREW),MELAMINE,600V,	1	SA
23-18	DB92-04025C	ASSY PCB INVERTER	INVERTER,PF2_17S,142mm	1	SA
23-18-1	3501-001154	RELAY-MINIATURE	12V,200mW,3000mA,1FormA,	2	SA
23-19	DB92-04916A	ASSY PCB MAIN-OUT	OUTDOOR,FJM NASA,180*8	1	SA
23-20	DB93-09497E	ASSY CONNECTOR WIRE	3,1015,16,RED,MG6250	1	SA
23-21	DB93-11280B	ASSY CONNECTOR WIRE-TERMINAL BLOCK	1101	1	SNA
23-22	DB91-00933A	ASSY-SCREW MACHINE	MH*, FJM,M3, L12	4	SA
24	DB96-24134B	ASSY VALVE	HP,AJ050TXJ2EG/EU,FJM	1	SNA
24-1	DB96-24135B	ASSY TUBE 4WAY	AJ050TXJ2EG/EU,FJM	1	SA
24-1-1	DB96-24632A	ASSY SWITCH PRESSURE	HP,AC071RXADKG/EU,A	1	SNA
24-1-1-1	DB34-00091A	SWITCH PRESSURE	DC5mA,DC5V,4.2MPa	1	SNA
24-2	DB96-24136A	ASSY TUBE EEV	AJ050NCJ2EH/EU,N-SI	1	SA
24-3	DB62-09654A	VALVE SERVICE-SPINDLE	FLARE,R410A,9.52	2	SA
24-4	DB32-00278A	SENSOR TEMP	103AT,WB20M-024-411/WHT,L700	1	SA
24-6	DB81-00635A	SPRING ETC-SENSOR	DVM-SYSTEM,STS304,R2.5	5	SA
24-7	DB62-09652A	VALVE SERVICE-SPINDLE	FLARE,R410A,6.35	2	SA
25	DB82-03774D	A/S ASSY-EEPROM	AJ050TXJ2KG,EU,SI,PF2-17	1	SA
26	DB93-12483A	ASSY PCB SUB-EEPROM	SUB,DVPLUS4 UP,20*2	1	SA
26	DB64-03201B	LOGO	Outdoor Unit,PVC,T0,1,200,286C,tran	1	SA
27	DB96-19305A	ASSY TUBE-CONNECTOR	FJM Singapore PJT,AS	1	SA
27-1	DB60-30010C	FASTENER-NUT FLARE	BRASS	1	SA